



Corporate Overview

Commanding Leadership

Founded in 1979, NAI Capital is a full service commercial real estate brokerage with 16 offices serving the greater Los Angeles marketplace, consisting of: Los Angeles, Orange, Riverside, San Bernardino, Ventura and Kern Counties. NAI Capital's extraordinary growth has been fueled by several primary factors, including our corporate philosophy: **With integrity we do what we say we will, when we say we will, how we say we will with plenty of client communication.** We have excellent broker retention as a direct result of a business plan that emphasizes the following:

- Recruitment of experienced and productive brokers
- Development and training of new brokers
- Highly skilled and knowledgeable administrative staff
- Commitment to state-of-the-art technology
- An ongoing program of continuing education

At NAI Capital we pride ourselves on treating each transaction or service as if it were personal, placing the client first and working hard as well as smart. Creating long-term relationships is just as important as closing deals.

Walt Disney Concert Hall — Los Angeles, CA



Committed to Southern California. Connected to the World.
We are commercial real estate at its best.

Brokerage Services

Traditional transactional services include sales and leasing, disposition and acquisition, in the following disciplines:

- Office
- Retail
- Industrial
- Land
- Multi-Family
- Investments

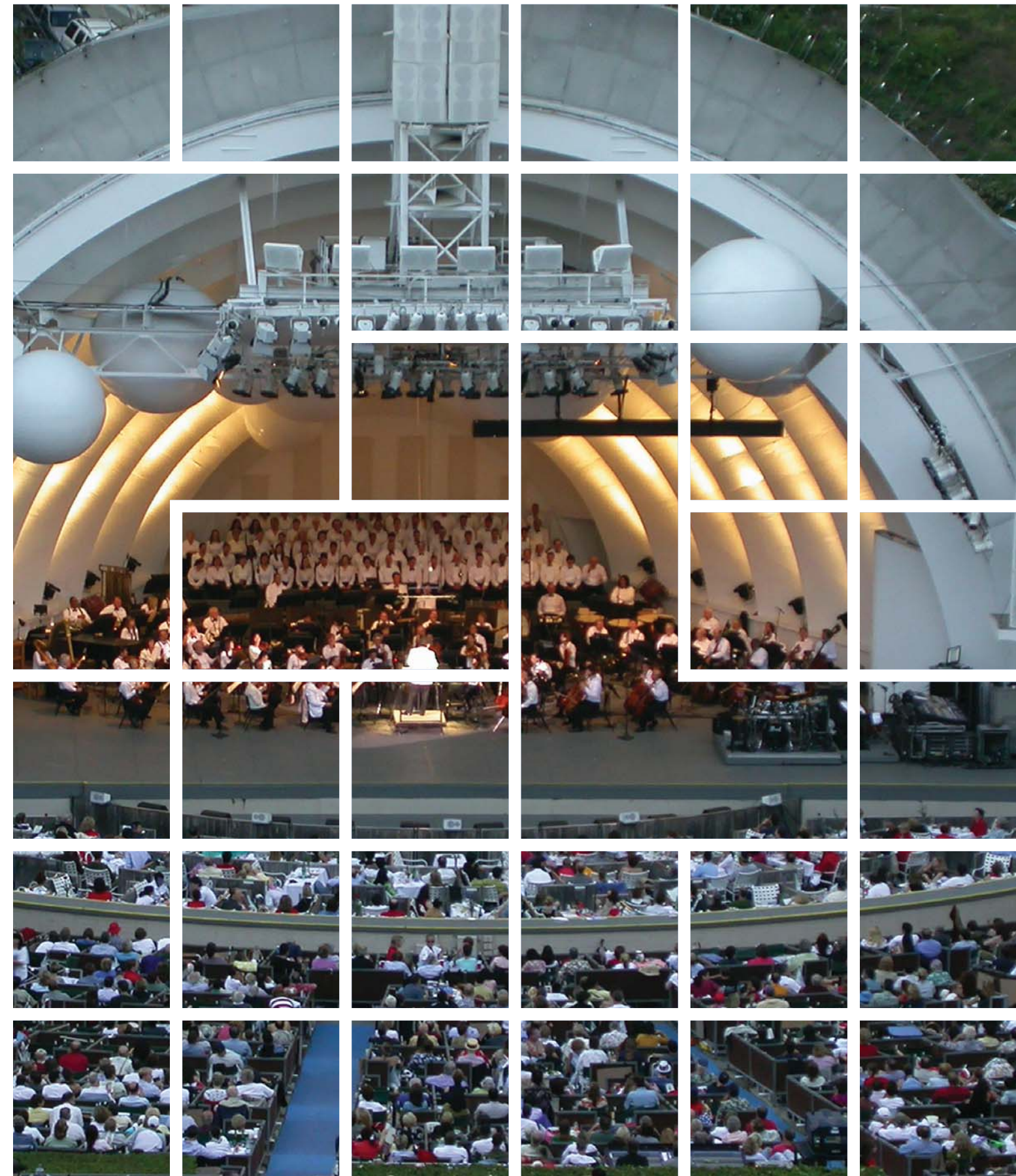
NAI Capital also provides specialized transactional services within specific divisions and teams:

- Corporate Services
- NNN Leased Sales
- Non-Profit
- Medical
- Restaurant and Entertainment
- Logistics
- Portfolio Dispositions

NAI Capital offers non-transactional real estate services, either in conjunction with or separate from transactional service, including:

- Portfolio Management
- Asset Management
- Property Management
- Construction Management
- Receiverships
- Financing
- Due Diligence

Hollywood Bowl — Hollywood, CA



We work hard to exceed your expectations, and to ensure the success of your real estate transaction.

Market Intelligence

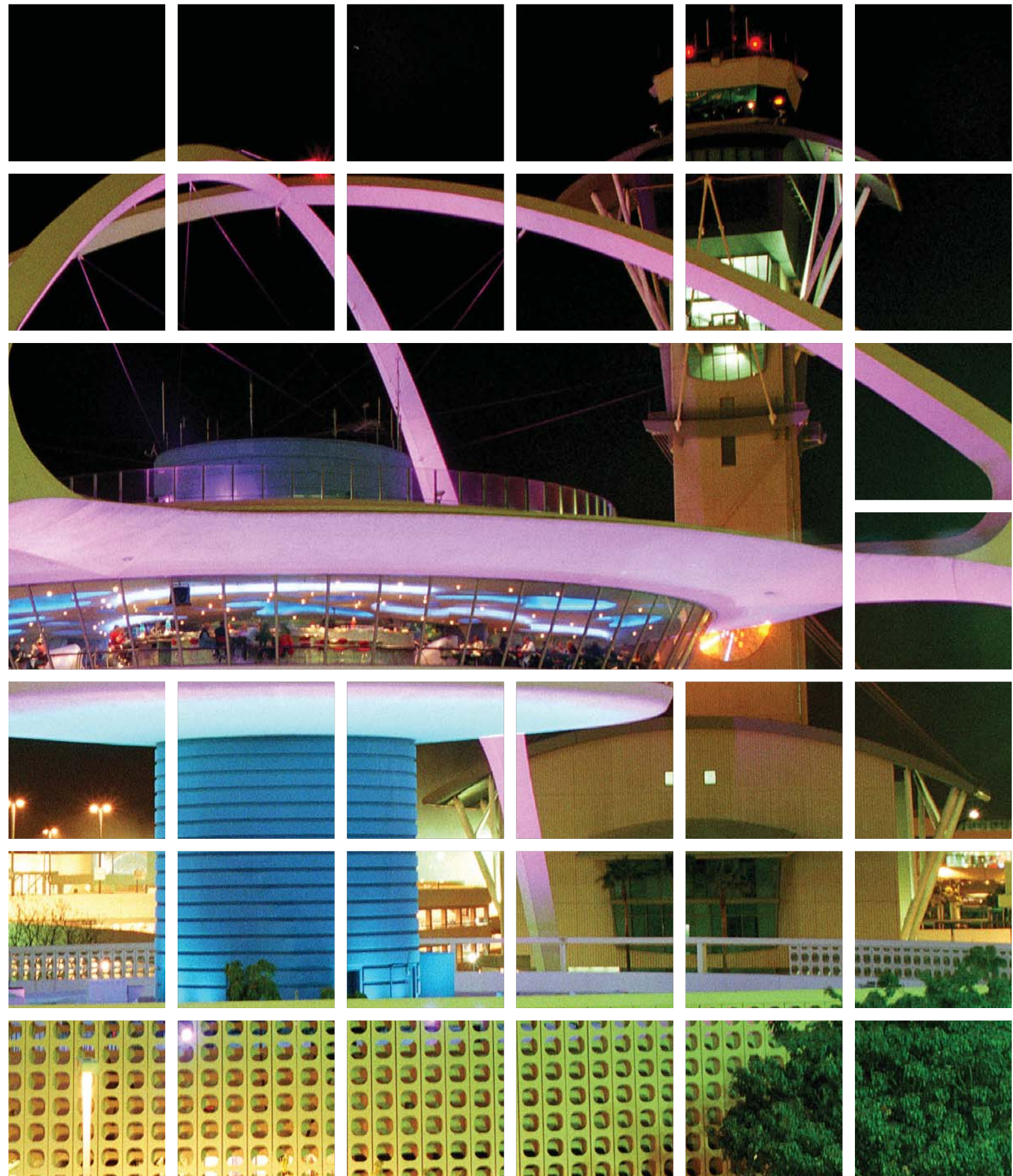
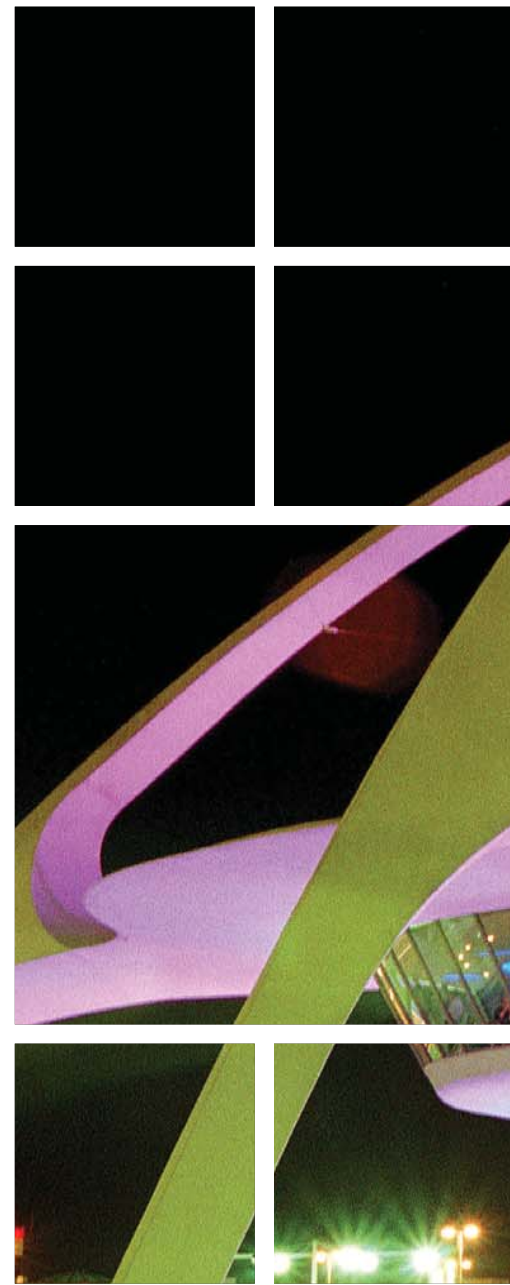
As the exclusive NAI Global member in the greater Los Angeles market, NAI Capital provides effective and efficient transactional real estate services with over 300 offices in 40 countries. We cover primary, secondary and tertiary markets:

- Asia Pacific
- Canada
- EMEA (Europe, Middle East, Africa)
- Latin America and the Caribbean
- United States

And, as a member of NAI Global, NAI Capital has immediate access to non-transactional services:

- Lease Administration
- Lease Audit
- Sealed Bid/Auction Sales
- Trade Credit

Affiliations:



Theme Building at Los Angeles International Airport
Photo by Gary Friedman, All Rights Reserved.

Track record...Long-term relationships...Technology. Whatever your requirements, we have the resources to deliver the results you need.

Regional Offices



BAKERSFIELD

8302 Espresso Drive, Ste. 100
Bakersfield, California 93312
(661) 864-1000
FAX (661) 864-1011

COMMERCE

400 Citadel Drive, Ste. 150
Los Angeles, California 90040
(323) 201-3600
FAX (323) 201-3636

ENCINO-Corporate Office

16001 Ventura Blvd., Ste. 200
Encino, California 91436
(818) 905-2400
FAX (818) 905-2425

NEWPORT BEACH

4650 Von Karman Avenue
Newport Beach, California 92660
(949) 854-6600
FAX (949) 854-7378

ONTARIO

3281 East Guasti Road, Ste. 225
Ontario, California 91761
(909) 945-2339
FAX (909) 945-2338

PALM DESERT

COMING SOON

PASADENA

225 South Lake Avenue, Ste. 1170
Pasadena, California 91101
(626) 564-4800
FAX (626) 564-4846

RIVERSIDE

2280 Market Street, Ste. 150
Riverside, California 92501
(951) 346-0800
FAX (951) 346-0801

SANTA CLARITA

27971 Sloan Canyon Road
Castaic, California 91384
(661) 705-3550
FAX (661) 705-3566

SIMI VALLEY

1200 E. Los Angeles Ave., Ste. 205
Simi Valley, California 93065
(805) 522-7132
FAX (805) 522-1361

SOUTH BAY

970 W. 190th Street, Ste. 100
Torrance, California 90502
(310) 532-9080
FAX (310) 327-6259

TEMECULA

27720 Jefferson Avenue, Ste. 220
Temecula, California 92590
(951) 491-7590
FAX (951) 491-7599

VENTURA COUNTY

300 Esplanade Dr., Ste. 1660
Oxnard, California 93036
(805) 278-1400
FAX (805) 278-1414

WEST LOS ANGELES

1640 South Sepulveda Blvd., Ste. 500
Los Angeles, California 90025
(310) 440-8500
FAX (310) 440-8525

WESTLAKE VILLAGE

2555 Townsgate Road, Ste. 320
Westlake Village, California 91361
(805) 446-2400 (818) 865-1200
FAX (805) 446-2401

WESTMINSTER/PACIFIC RIM

15496 Magnolia Street, Ste. 111
Westminster, California 92683
(714) 793-1111
FAX (714) 793-1100